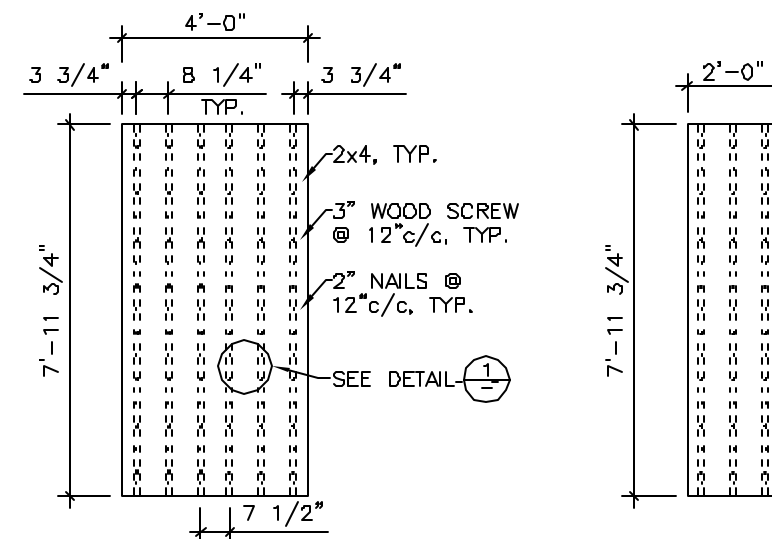
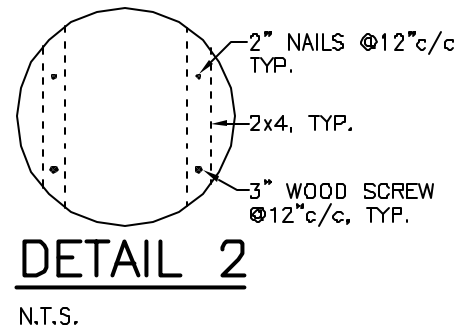


2x4 STAGE PLATFORM PARTIAL PLAN VIEW
1/4"=1'-0"



4x8 PLATFORM 1/4"=1'-0"
2x8 PLATFORM 1/4"=1'-0"



DETAIL 2
N.T.S.

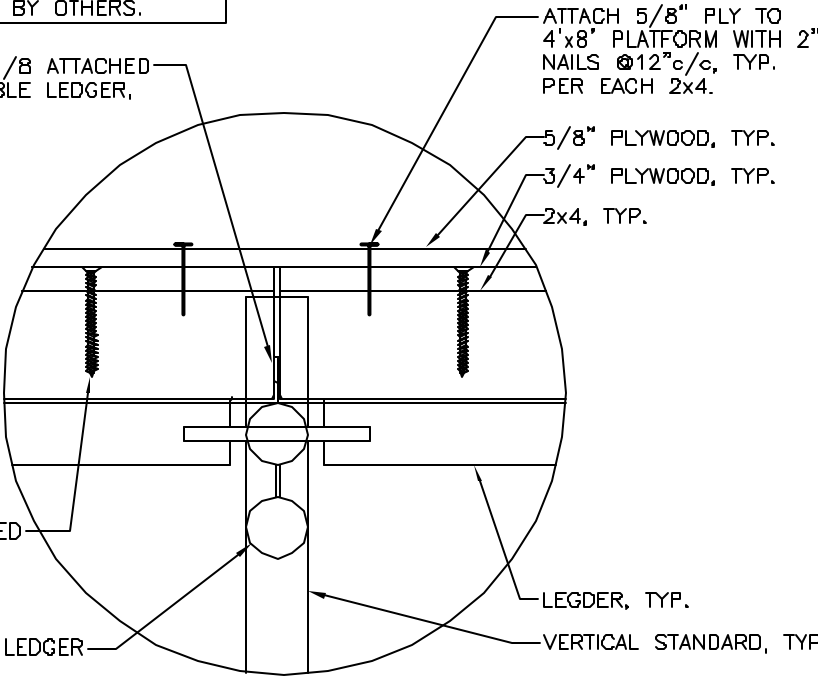
DENOTES SHEET OF 5/8" PLYWOOD STAGGERED ABOVE 4'x8' PLATFORM, TYP.

ATTACHMENT OF L1 1/2x1 1/2x1/8 TO TOP CHORD OF 4' LONG DOUBLE LEDGER DESIGNED BY OTHERS.

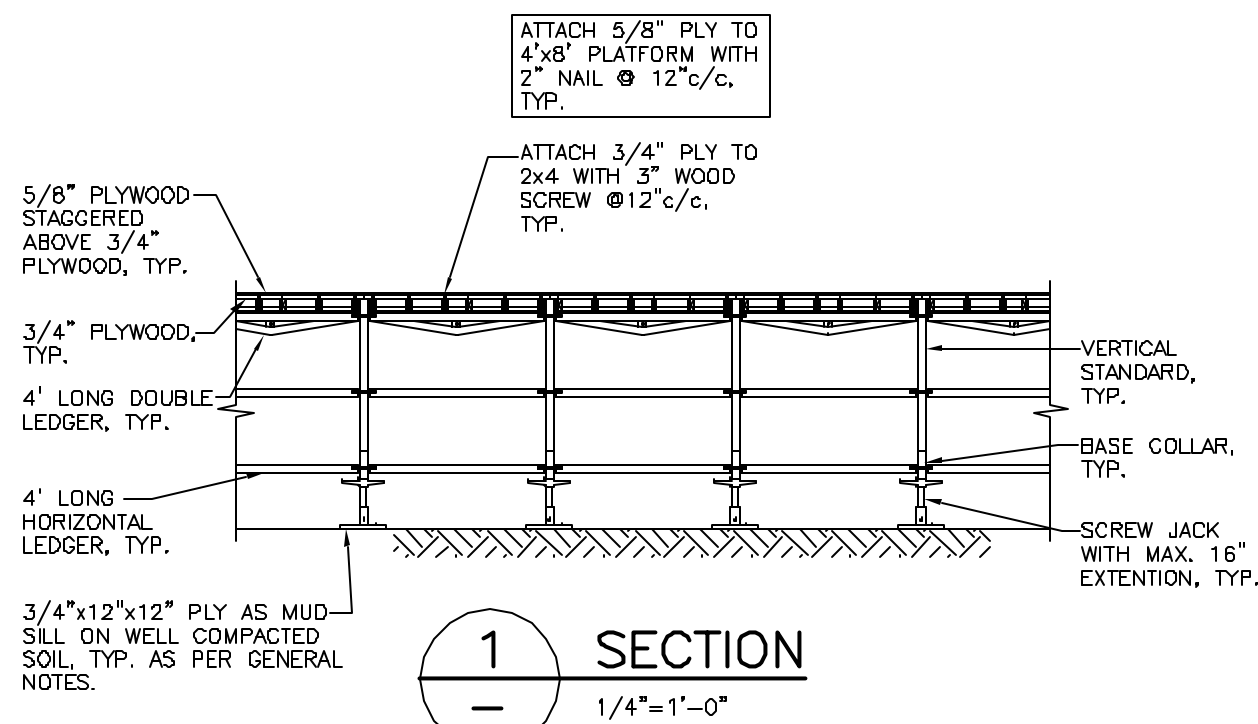
L1 1/2x1 1/2x1/8 ATTACHED TO 4' LONG DOUBLE LEDGER, TYP.

3/4" PLY ATTACHED TO 2x4 WITH 3" WOOD SCREW @ 12" c/c, TYP.

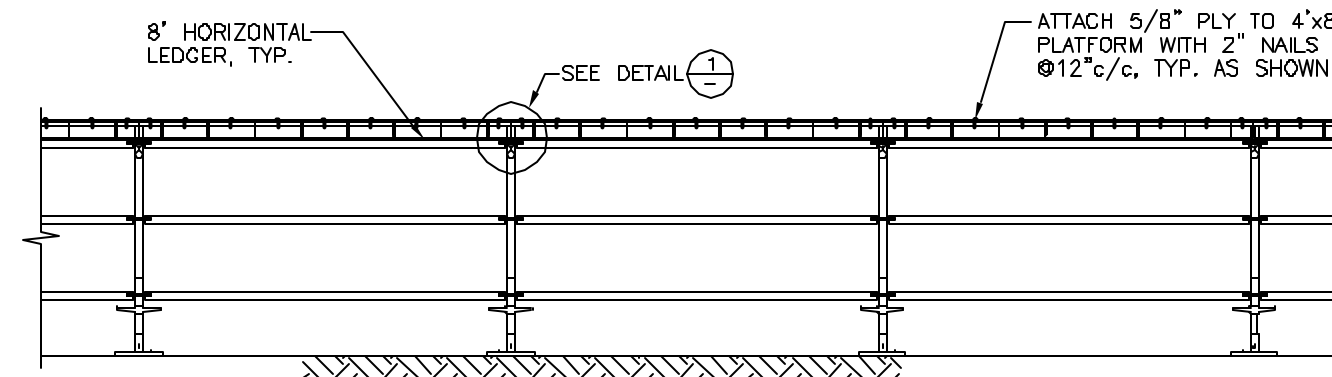
4' LONG DOUBLE LEDGER BEYOND, TYP.



DETAIL 1
N.T.S.



1 SECTION
1/4"=1'-0"



2 SECTION
1/4"=1'-0"

GENERAL NOTES:

1. DESIGN LIVE LOADS:

- VERTICAL LIVE LOAD 50 PSF
- DEAD LOAD OF PLATFORM 6 PSF
- LATERAL LIVE LOAD N/A

- COMPLIANCE WITH B.C. BUILDING CODE SUBSECTION 4.1.6 "LIVE LOAD DUE TO USE AND OCCUPANCY"

- DEFLECTION L/270

- WORKERS BUILDING THE PLATFORM SHALL COMPLY WITH I.H.&S. REGULATIONS AT ALL TIMES.

2. PLATFORM CONSTRUCTION:

EQUIPMENT:

CONTRACTOR TO REFER TO THE EQUIPMENT SUPPLIER'S APPLICABLE DETAILS SHEETS AND MANUALS.

ALL EQUIPMENT MUST BE INSPECTED BY CONTRACTOR PRIOR TO USE. BENT OR DAMAGED EQUIPMENT OR SUBSTANDARD MATERIAL SHALL NOT BE USED.

ALL FALSEWORK SHOULD BE WEDGED AGAINST EXISTING STRUCTURES. (WHERE POSSIBLE)

TIMBER:

ALL LUMBER TO BE D. FIR NO. 2 AND BETTER. PLYWOOD TO BE D. FIR COFI EXTERIOR STANDARD CONSTRUCTION GRADE OR BETTER. (THICKNESS AS DETAILED).

SOIL CONDITIONS:

ASSUMED SOIL BEARING CAPACITY FOR MUD SILL TO BE :

- (3) -2x10 3000 PSF
- (2) -2x10 4500 PSF

CONTRACTOR TO OBTAIN CONFIRMATION FROM SOIL ENGINEER.

3. ALLROUND SCAFFOLDING

VERTICAL LEGS ARE STEEL PIPE: 1.9" O.D. SCH. 40 (T = 0.145") STANDARDS.

VERTICAL STANDARDS MUST BE WITHIN 1/2" OF PLUMB AND MUST BE CHECKED PRIOR TO USE.

REFER TO COAST STAGING SCAFFOLDING FOR SPECIFICATIONS ON THE SYSTEM SCAFFOLDING

4. SITE CONDITIONS:

IT IS THE RESPONSIBILITY OF THE CONTRACTOR TO CHECK AND VERIFY ALL DIMENSIONS, ELEVATIONS, SHORE AND FRAME HEIGHTS.

THE ENGINEER SHALL BE IMMEDIATELY NOTIFIED OF ANY DISCREPANCIES OR INCONSISTENCIES BETWEEN THIS DRAWING AND ACTUAL SITE CONDITIONS.

5. INSPECTION

THE PLATFORM MUST BE INSPECTED AND APPROVED IN WRITING BY A PROFESSIONAL ENGINEER REGISTERED IN THE PROVINCE OF BRITISH COLUMBIA PRIOR TO ALLOWING PUBLIC ACCESS ON THE STAGE.

**PRELIMINARY
NOT FOR CONSTRUCTION**

EQUIPMENT SUPPLIED BY:
Coast Staging & Events Ltd.
2848 WEST 8TH AVE., VANCOUVER, B.C., V6L 1E5
PHONE (604) 837.9502
FAX. (604) 877.0053

No	DATE	ISSUE - REVISION

COPYRIGHT RESERVED
THIS DRAWING AS AN INSTRUMENT OF SERVICE IS AND REMAINS THE EXCLUSIVE PROPERTY OF
BOGDONOV PAO ASSOCIATES LTD.
AND MAY NOT BE REPRODUCED, COPIED OR LOANED BY ANY MEANS WITHOUT WRITTEN PERMISSION FROM THE FIRM.
ALL DESIGNS, CONCEPTS, AND OTHER INFORMATION SHOWN ON THIS DRAWING ARE ONLY FOR USE IN THIS SPECIFIC PROJECT AND SHALL NOT BE USED OTHERWISE WITHOUT WRITTEN PERMISSION FROM BOGDONOV PAO ASSOCIATES LTD.

SEAL

BOGDONOV PAO ASSOCIATES LTD.
A Member of BPA Group of Companies
STRUCTURAL ENGINEERS

1666 West 8th Avenue
Vancouver, BC
Canada, V6J 1V4
Tel. 604 878-4377
Fax 604 878-4373
www.bogdonovpao.com
E-Mail - drawings@bogdonovpao.com

PROJECT NAME:
**STAGE PLATFORM
2848 WEST 8TH AVE.
VANCOUVER, B.C.**

DRAWING TITLE:
**2x4 STAGE PLATFORM
PLAN AND SECTIONS**

THIS LAYOUT HAS BEEN PREPARED FROM:	
DRAWING: -	DATED: -
REVISION: -	DATED: -
STRUCTURAL CONSULTANT: -	
DRAWN AC	PROJECT 07260
DESIGNED AC/SD	DRAWING
SCALE AS NOTED DO NOT SCALE DRAWING	AS1
PLOTTED 07.06.08 16:48:19	

0" = 2"
ADJUST SCALES IF THIS DRAWING HAS BEEN REDUCED.